

July 2024



# Burton Substation

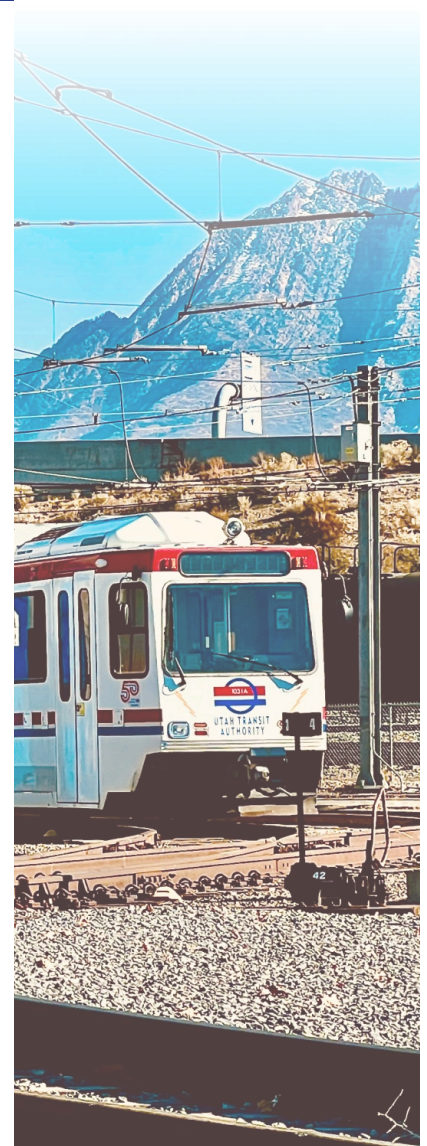
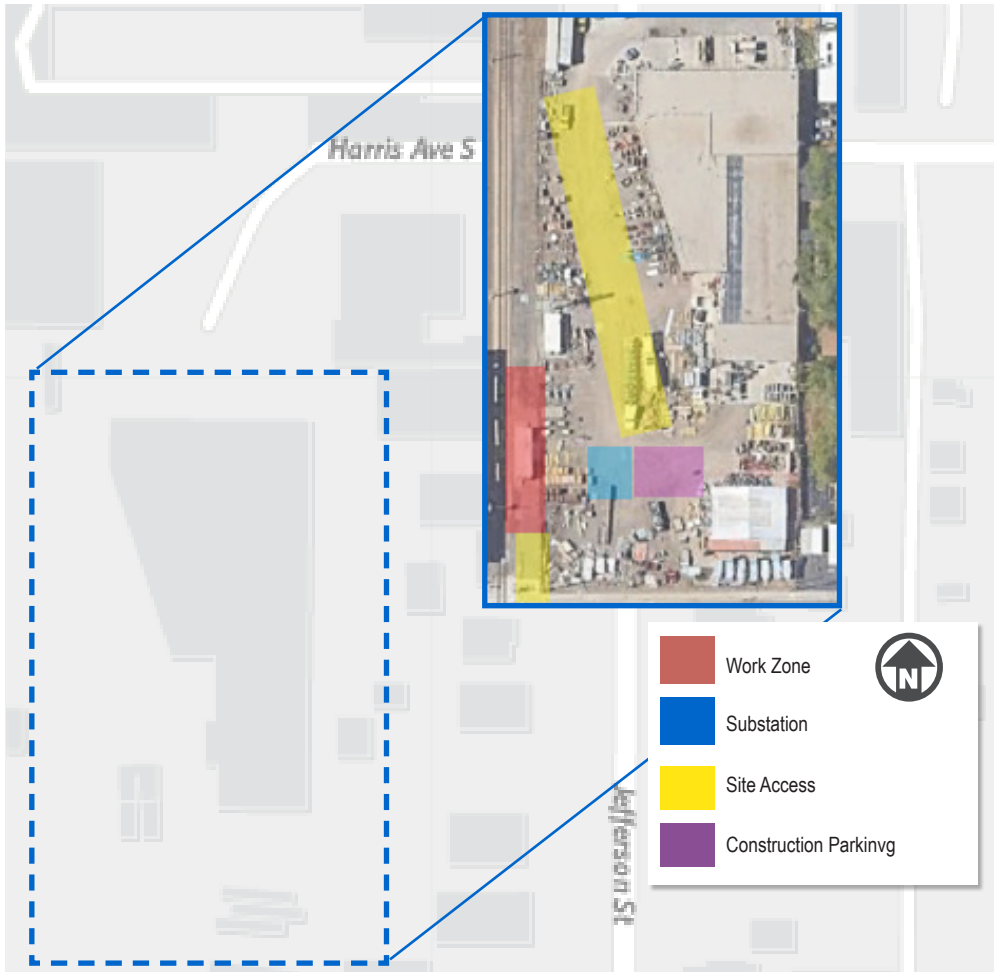
204 W 1700 S, Salt Lake City, UT 84115

## Construction Schedule\*

**Start Date:** July 2024  
**End Date:** October 2024

## Construction Impact

**Noise:** Day work with minimal night work that includes: trucks, excavators, concrete mixers, and cable pullers, causing noise, dust and vibration from construction.



\*Construction schedules are subject to change due to utility, material, weather, or equipment delays.



833-UTA-WORK



construction@rideuta.com



rideuta.com/construction

